

# FOR SALE

106 Main Street, Picton, ON  
\$730,000 | 18,313 SF | Vacant Land



## PROPERTY FEATURES

- Prime commercial development land located on Main Street, Picton
- 18,313 SF site situated in the center of Picton's downtown historic commercial area
- Across the street from the Picton Plaza which is anchored by Sobeys, Rexall, and McDonald's.
- The property is Zoned CC (Core Commercial) which allows for a variety of commercial/retail uses

**SALE PRICE:** \$730,000

**TAXES:** \$1,450 (2016)

**ZONING:** Core Commercial (CC)

**AVAILABLE AREA:** 18,313 SF

**LOT SIZE:** 121.36' x 159.13'

**PIN#:** 550670051

**WATER/SEWAGE:** Municipal Available

## Providing Solutions

Kostas Doulas  
Broker of Record  
613-384-1997 ext. 17  
kdoulas@rtcr.com

20 Gore Street, Suite 102  
Kingston, Ontario  
K7L 2L1  
[www.rtcr.com](http://www.rtcr.com)

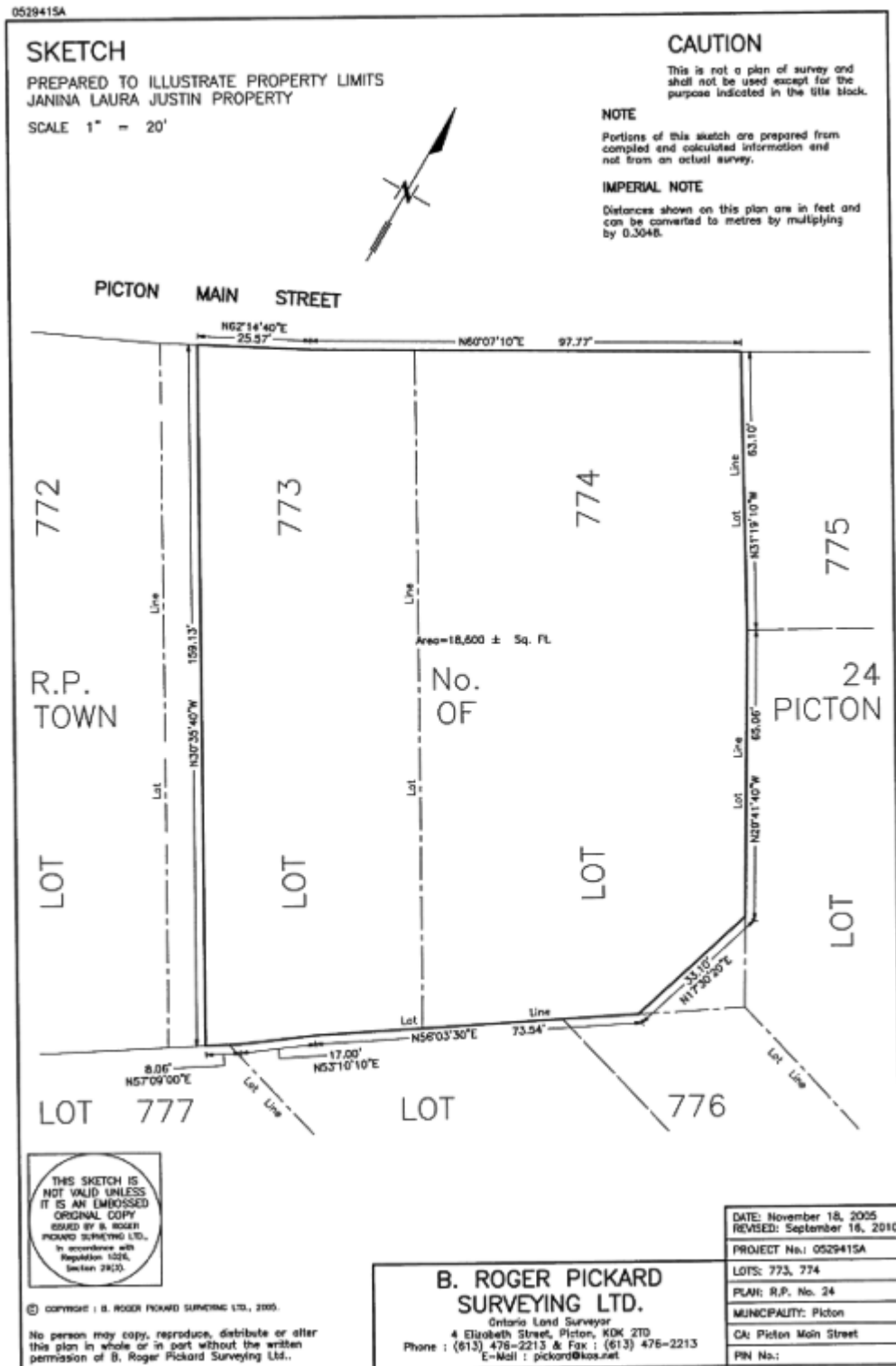
**Rogers  
& Trainor**  
Commercial Realty Inc.  
— Brokerage —

*All information provided is deemed reliable but is not guaranteed and should be independently verified.*

# FOR SALE

106 Main Street, Picton, ON  
\$730,000 | 18,313 SF | Vacant Land

## PROPERTY SKETCH

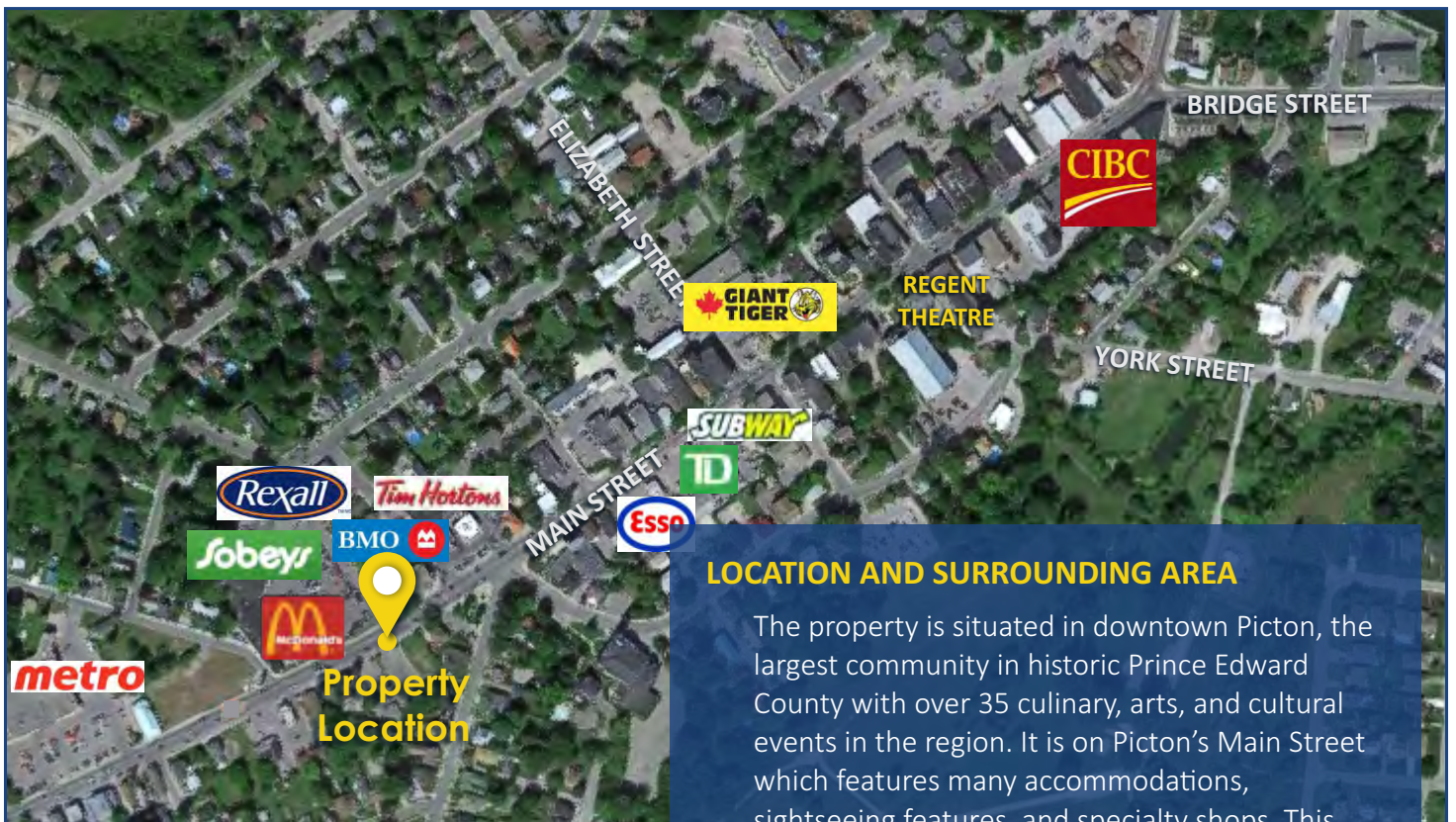
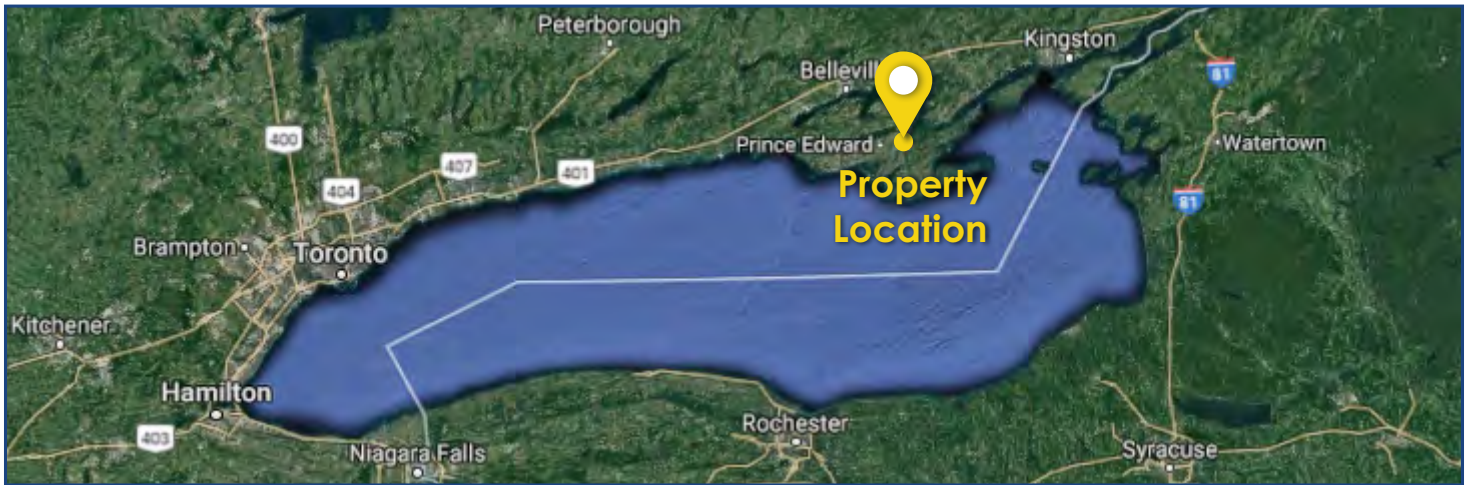




# FOR SALE

106 Main Street, Picton, ON  
\$730,000 | 18,313 SF | Vacant Land

## PROPERTY LOCATION



### LOCATION AND SURROUNDING AREA

The property is situated in downtown Picton, the largest community in historic Prince Edward County with over 35 culinary, arts, and cultural events in the region. It is on Picton's Main Street which features many accommodations, sightseeing features, and specialty shops. This street is part of the Loyalist Parkway which has over 40 archeological sites and 125 notable heritage buildings.