

# FOR LEASE

1412 Princess Street

UNIT 1D | Kingston, ON

\$19 PSF NET | 933 SF | Office/Retail



## PRIME OFFICE & RETAIL LOCATION

### KEY FEATURES

- Permitted uses in the C2.324 zoning include: Offices, Retail Stores, Restaurants, Day Care Centres
- Ample parking on site and transit stop adjacent to the property
- Approximate monthly rent of \$2,140 + HST and utilities

<b>Lease Rate:</b>	\$19.00 PSF Net
<b>Additional Rent:</b>	\$8.50 PSF (2022 Est.)
<b>Available Space:</b>	933 SF
<b>Zoning:</b>	C2.324
<b>Parking:</b>	Ample on Site
<b>Possession:</b>	Available Immediately
<b>Utilities:</b>	Separately metered and the responsibility of the Tenant
<b>Signage:</b>	Pylon sign on Princess Street and building facia



### Providing Solutions

James Ward  
Broker  
613-384-1997 ext. 25  
jward@rtcr.com

Alex Adams  
Sales Representative  
613-384-1997 ext. 15  
aadams@rtcr.com

20 Gore Street, Suite 102  
Kingston, Ontario  
K7L 2L1  
[www.rtcr.com](http://www.rtcr.com)

**Rogers  
& Trainor**

Commercial Realty Inc.  
Brokerage

All information provided is deemed reliable but is not guaranteed and should be independently verified.

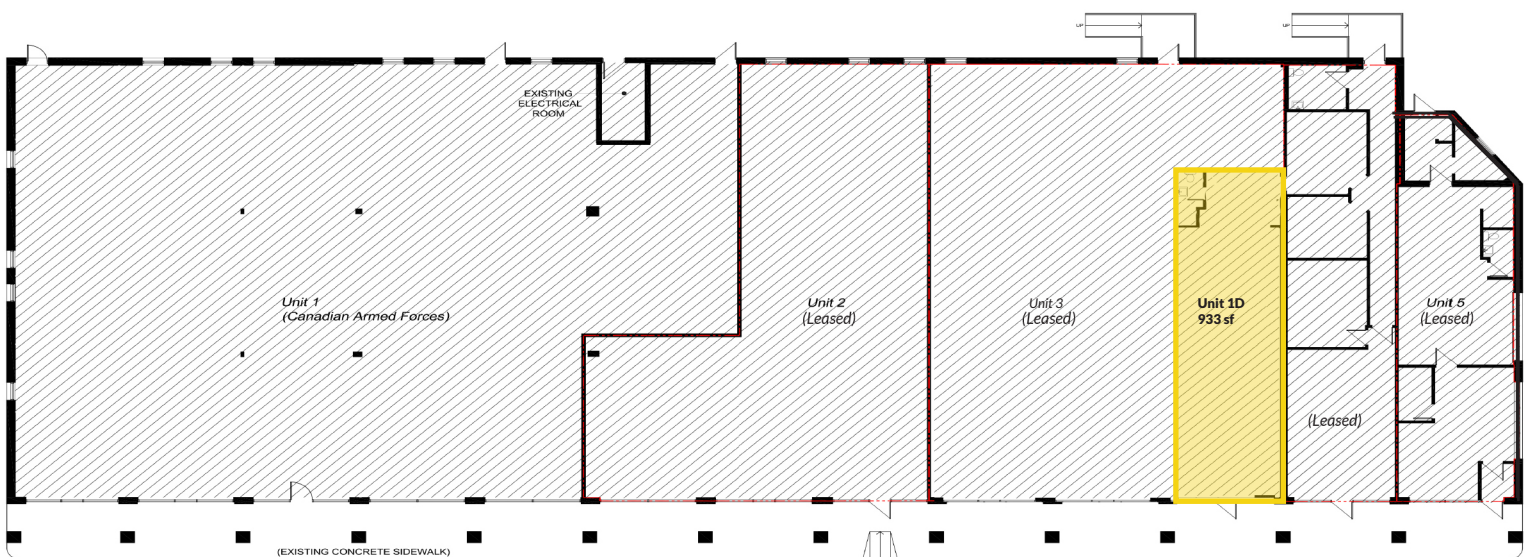
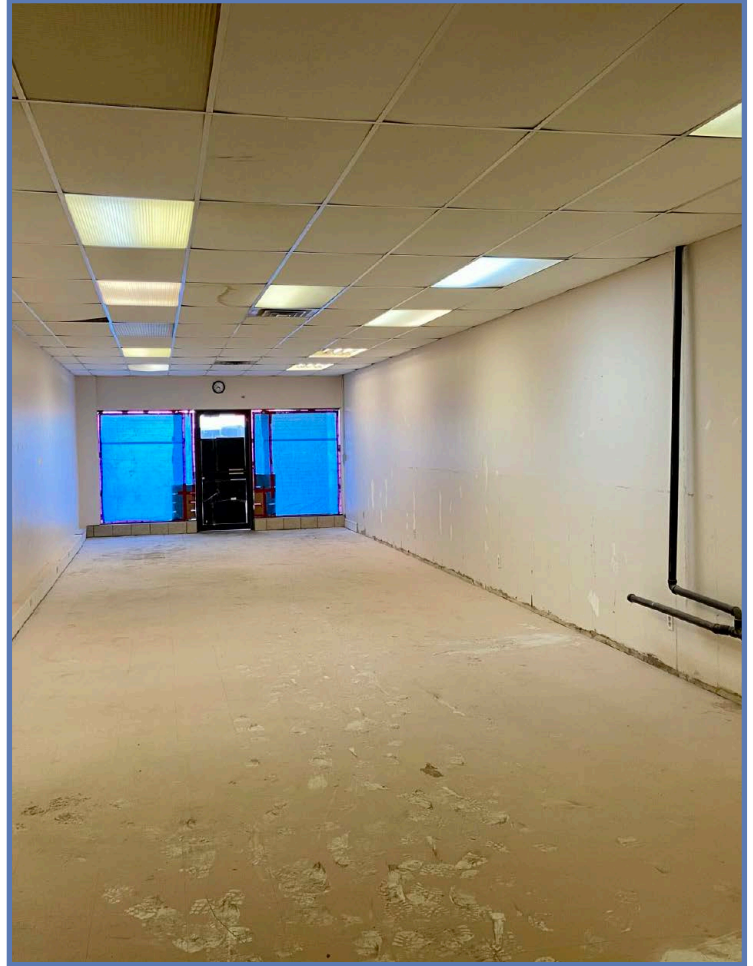
# FOR LEASE

1412 Princess Street

Kingston, ON

\$19 PSF NET | 933 SF | Office/Retail

## UNIT 1D - 933 SF



All information provided is deemed reliable but is not guaranteed and should be independently verified.

# FOR LEASE

1412 Princess Street

Kingston, ON

\$19 PSF NET | 933 SF | Office/Retail

## LOCATION

### LOCATION

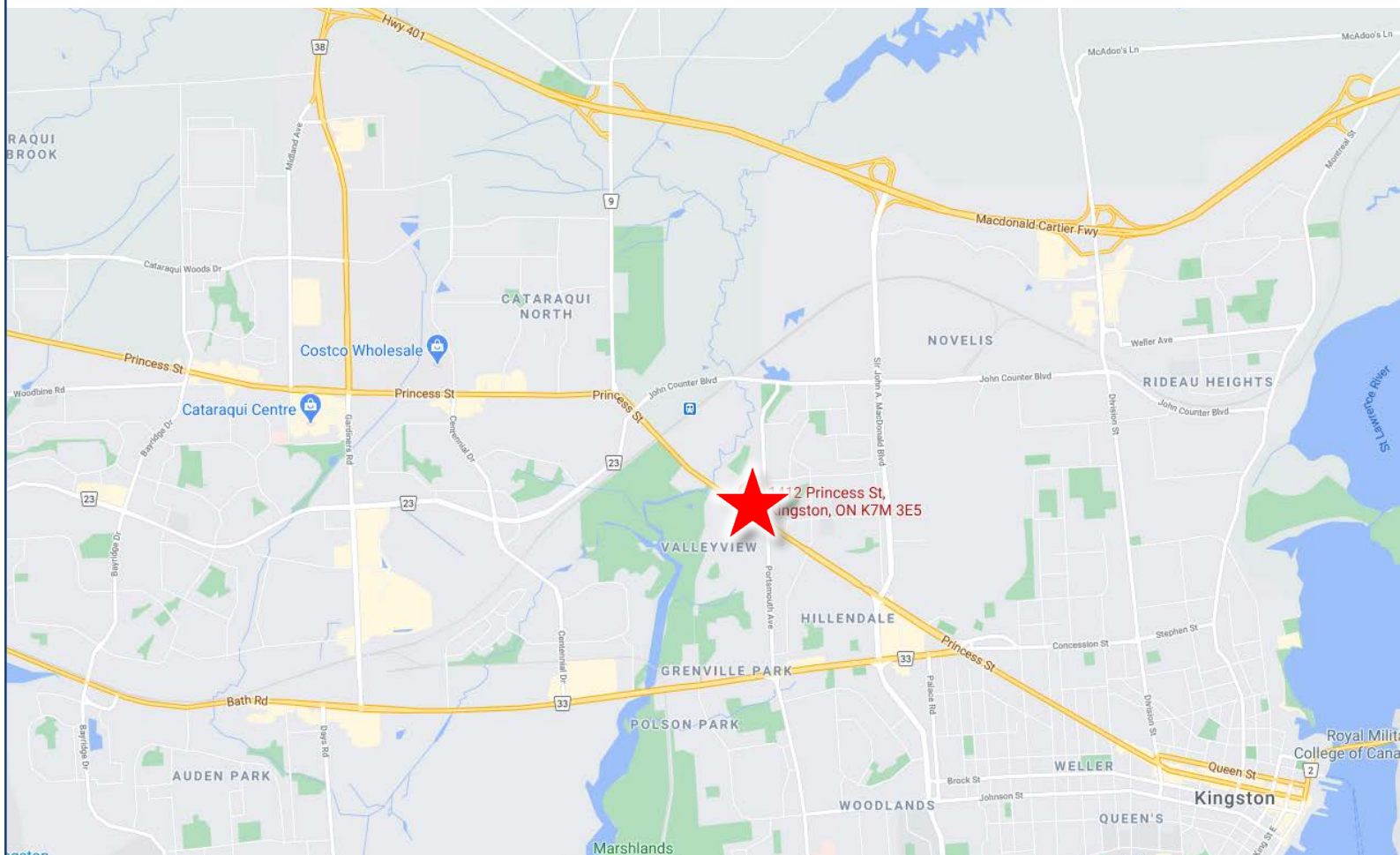
- The property is located on the west side of Princess Street in a high traffic retail and office plaza.
- Area contains a mix of single family dwellings, apartment buildings, condominiums, hotels and commercial establishments.
- Local businesses include Kingston Dodge Chrysler, MyCar Kingston, KFC, Maple Crest Inn, Loyola School of Adult and Continuing Education, Burning Grill Korean Cuisine. and the Ambassador Hotel.

### SCHOOLS

- St. Lawrence College
- Lord Strathcona Public School
- Saint Paul Catholic School

### TRANSIT

- 1 Bus stop directly in front of the property and a second at the intersection of Portsmouth Avenue and Princess Street.



All information provided is deemed reliable but is not guaranteed and should be independently verified.