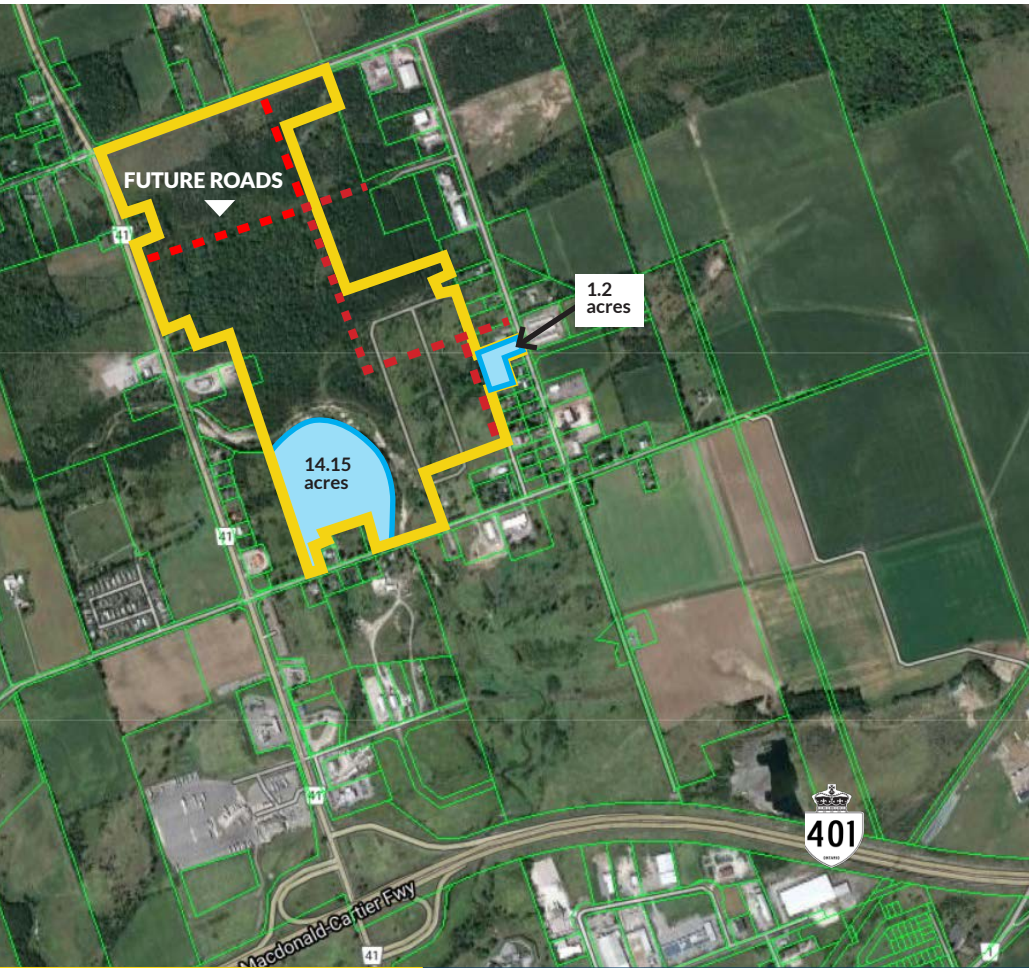


RICHMOND INDUSTRIAL PARK, GREATER NAPANEE VACANT INDUSTRIAL LAND



LOCATION

The **Richmond Industrial Park** is located in the Town of Greater Napanee. The Park is fully serviced with land available to purchase. With immediate access to Highway 401, Richmond Industrial Park is ideal for general industry as well as distribution and warehousing opportunities.

Goodyear's 800,000 SF plant is the anchor to the Richmond Industrial Park. Other businesses developments include: RC Industrial, CAT Transport and GT Machining & Fabricating.

PARCEL	SIZE	PRICE	ZONING
33 Van Luven Rd.	14.15 acres	\$1,060,000	BP
170 Kimmett Side Rd.	1.2 acres	\$150,000	M2

FOR SALE

VARIOUS LOTS AVAILABLE

➔ Lennox & Addington has a population of 42,888 and a labour force of 23,275.

➔ Direct access to the second largest labour pool in Eastern Ontario with over 300,000 people within a 30-minute drive of central L&A.

➔ Located on the main Toronto-Ottawa-Montreal corridor

➔ Lennox & Addington includes large international corporations including Goodyear, Bombardier and Lafarge (Source: Lennox & Addington County)



Rogers & Trainor

Commercial Realty Inc.
Brokerage

20 Gore Street, Suite 102
Kingston, Ontario K7L 2L1
613-384-1997

WWW.RTCR.COM

KOSTAS DOULAS
Broker of Record

✉ kdoulas@rtcr.com

ALEX ADAMS
Sales Representative

✉ aadams@rtcr.com

RICHMOND INDUSTRIAL PARK VACANT INDUSTRIAL LAND

