

FOR LEASE

847 PRINCESS STREET, UNIT 209

\$12.00 PSF Net | +/-160 SF | Office

OFFICE SPACE IN KINGSTON'S WESTGATE SQUARE



PROPERTY DETAILS

Lease Rate:	\$12.00
Additional Rent:	\$ 10.50 (2023 Estimate)
Available Area:	+/- 160 SF
Zoning:	UR5 (Urban Residential Zone)
Electric:	Individually metered
Parking:	Surface Parking Available
Signage:	Directory Board, Exterior TBD

BUILDING FEATURES

- Corner & South facing Offices AVAILABLE
- High Profile Corner Location
- Wheelchair accessibility, one elevator
- Common washrooms on each floor

Walk Score

80

WALKER'S PARADISE
Daily errands do not require a vehicle.

Transit Score

56

GOOD TRANSIT
Many nearby public transportation options.

Bike Score

82

VERY BIKEABLE
Biking is convenient for most trips.

KOSTAS DOULAS

Broker of Record

✉ kdoulas@rtcr.com

☎ 613-384-1997 Ext. 17

ECHO

PERRY-CUMBERLAND

Sales Representative

✉ echopc@rtcr.com

☎ 613-384-1997 ext. 13

Rogers & Trainor

Commercial Realty (2009) Inc.
Brokerage

WWW.RTCR.COM

📍 20 Gore Street, Suite 102
Kingston, Ontario K7L 2L1

FOR LEASE

847 PRINCESS STREET, UNIT 209

\$12.00 PSF Net | +/- 160 SF | Office

PHOTOS



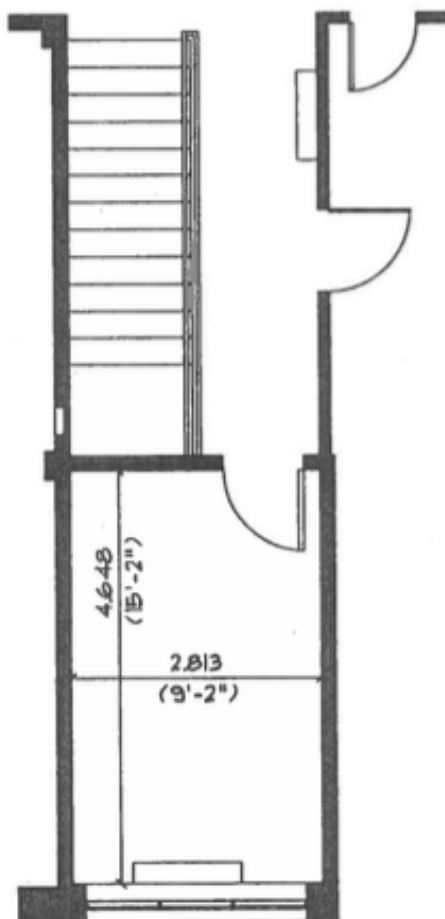
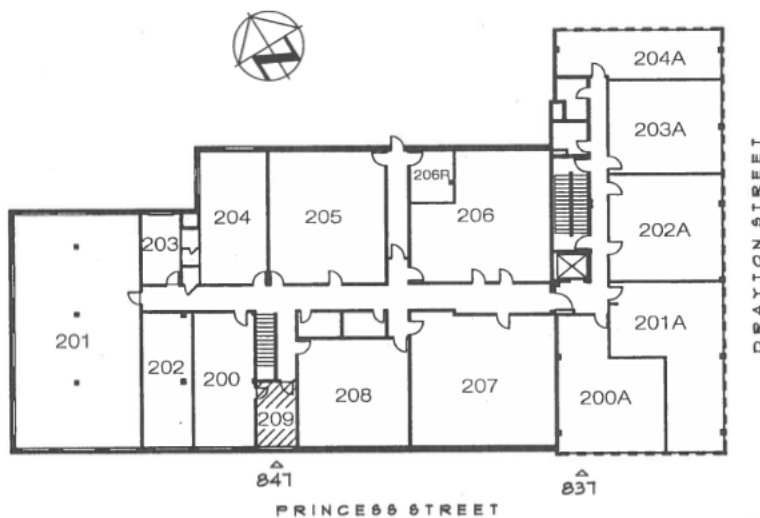
FOR LEASE

847 PRINCESS STREET, UNIT 209

\$12.00 PSF Net | +/- 160 SF | Office

FLOOR PLAN

209

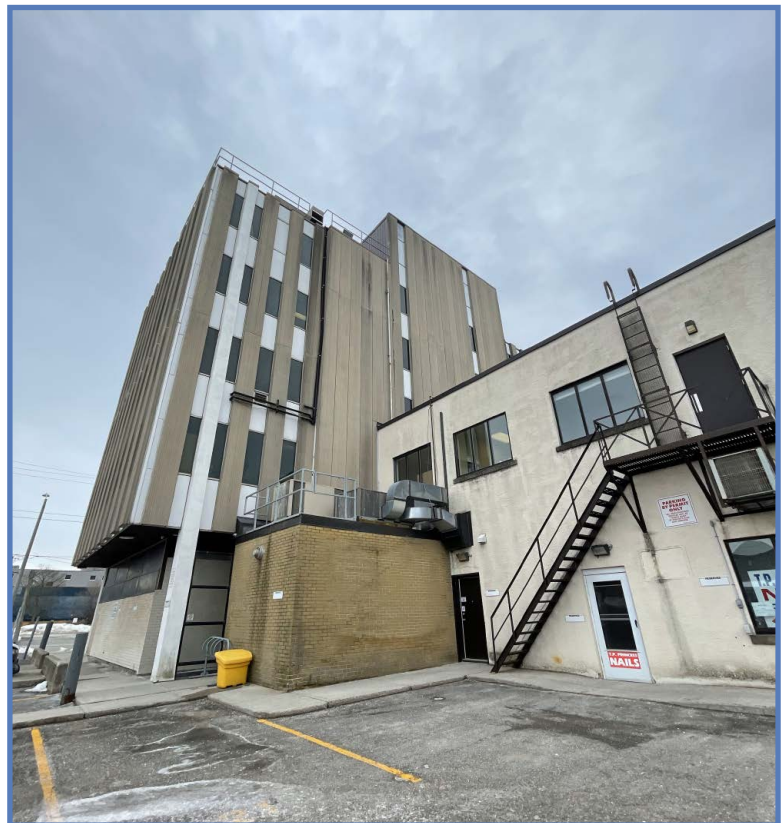


FOR LEASE

847 PRINCESS STREET, UNIT 209

\$12.00 PSF Net | +/-160 SF | Office

PHOTOS



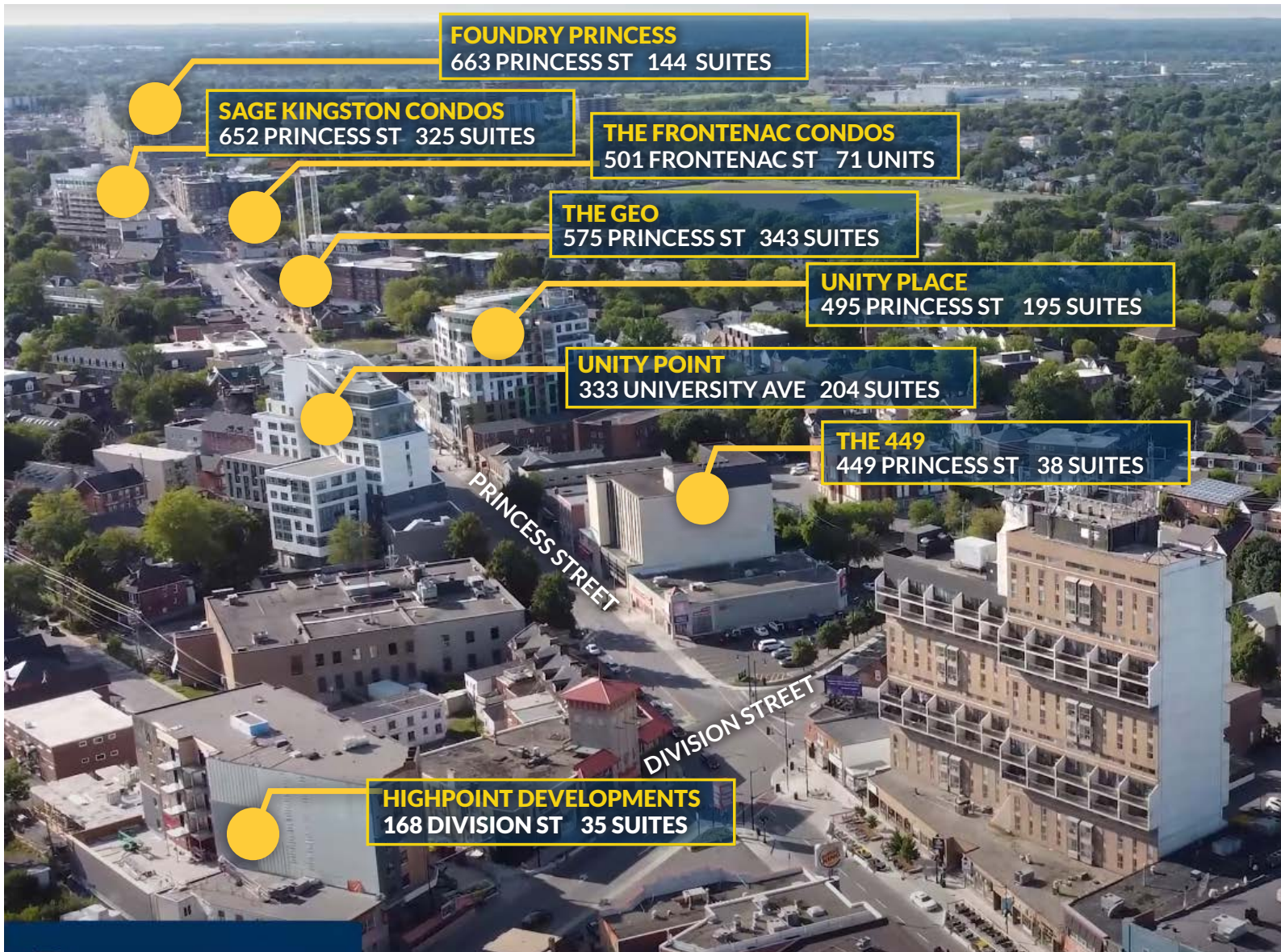
All information provided is deemed reliable but is not guaranteed and should be independently verified.

FOR LEASE

847 PRINCESS STREET, UNIT 209

\$12.00 PSF Net | +/-160 SF | Office

THE CHANGING FACE OF WILLIAMSVILLE



The subject property is located on the northern end of the Williamsville neighbourhood, where a large number of Multi Residential and Condominium developments are in various stages of completion; under construction; or pending final approval.

The neighbourhood continues to see and anticipate significant new developments in the near future.

In addition, the surrounding residential neighbourhoods have seen some newer in-fill housing and many area houses have been updated and/or expanded.

Recently, the Williamsville Main Street Reconstruction Project has commenced which include upgrades and improvements to the roads, curbs and sidewalks with the inclusion of new bike lanes. The sanitary and storm sewers are also being upgraded.

FOR LEASE

847 PRINCESS STREET, UNIT 209

\$12.00 PSF Net | +/- 160 SF | Office

KINGSTON'S THRIVING BUSINESS COMMUNITY

SKILLED AND MOTIVATED
WORKFORCE



KINGSTON ADVANTAGE: WAREHOUSING & LOGISTICS

The City of Kingston is a liveable 21st century city and is a premier location for warehousing & logistics opportunities. Kingston is the regional centre for Eastern Ontario and represents 25M people and the third largest GDP in North America within an 8-hour drive. Companies choose Kingston for the ideal logistics along Highway 401, close proximity to 1000 Islands International Bridge, Picton Deep Water Port and proximity to major Canadian cities. The 1000 km of fibre optics cable, proximity to markets and workforce make Kingston an ideal location for investment.

 **2.6%** 2019 GDP
GROWTH

#1 SMALL
CITY

FOR FOREIGN DIRECT
INVESTMENT STRATEGY



10
MIN

AVERAGE
COMMUTE
TO WORK

INNOVATION & ENTREPRENEURSHIP

Kingston's culture of innovation and entrepreneurship is growing and bringing with it new people, big ideas, diverse personalities and a fresh outlook on how to drive economic development. The city is located in an easy-to-access ecosystem, within driving distance from major urban markets: Toronto, Montreal and Ottawa, offering incredible resources ranging from investors, mentors, acceleration programs, and infrastructure. Kingston is bringing people together, supporting their drive to create, explore and innovate. Kingston develops new talent at three post-secondary educational institutions collectively attracting, educating, training and inspiring more than 45,000 students each year.

 POPULATION
176,000

45,000

STUDENTS ENROLLED

Queen's University, RMC
St. Lawrence College



ACCELERATE GROWTH WITH RESEARCH EXCELLENCE

Locating in Kingston helps companies execute a growth strategy. Kingston has a strong history of innovative and leading research, development and manufacturing companies. Businesses such as DuPont, INVISTA, Bombardier and GreenCentre Canada have significant global research and development facilities in order to take advantage of the research partnerships available with Kingston's local colleges and universities.



Tim Hortons



FOR LEASE

847 PRINCESS STREET, UNIT 209

\$12.00 PSF Net | +/-160 SF | Office

LOCATION



NEIGHBOURHOOD HIGHLIGHTS

RESTAURANTS

- Pat's Restaurant
- Guac Mexi Grill
- Harvey's
- Popeye's Louisiana Kitchen
- Wing Central Kingston
- Wendy's
- McDonald's

FITNESS & RECREATION:

- YMCA
- Splitsville Kingston
- Whipped Fitness
- F45 Training
- Transformation Training
- Third Avenue Park
- Boiler Room Climbing Gym

AMENITIES:

- CIBC, TD, BMO, RBC, Scotiabank
- Kingston Frontenac Public Library
- Downtown Animal Hospital
- Medical Arts Pharmacy
- Pam's Flower Garden
- Speedy Auto Service
- PetroCanada

KOSTAS DOULAS

Broker of Record

✉ kdoulas@rtcr.com

☎ 613-384-1997 Ext. 17

ECHO PERRY-CUMBERLAND

Sales Representative

✉ echopc@rtcr.com

☎ 613-384-1997 ext. 13

20 Gore Street, Suite 102
Kingston, Ontario
K7L 2L1

www.rtcr.com

**Rogers
& Trainor**

Commercial Realty Inc.
Brokerage

All information provided is deemed reliable but is not guaranteed and should be independently verified.