

FOR LEASE

189 MAIN STREET PICTON



PROXIMITY

Toronto	-	213 KM (2.9 hrs)
Kingston	-	85.5 KM (1.1 hr)
Ottawa	-	272 KM (3.1 hrs)
Belleville	-	34.2 KM (30 min)
Montreal	-	393 KM (4.7 hrs)

PROPERTY DETAILS

- Leaseable Area:** 2,640 +/- sf (Ground Floor)
(1,000 +/- sf Basement)
- Lease Rate:** \$25.00 Psf Net
- Additional Rent:** \$5.75 Psf (TMI)
- Zoning:** CC (Core Commercial)

- Heating:** Rooftop HVAC, gas fired,
electric baseboard
- Electrical:** 400 Amp
- Sewer:** Municipal
- Water:** Municipal

KOSTAS DOULAS

Broker of Record

✉ kdoulas@rtcr.com
☎ 613-384-1997 Ext. 17

📍 20 Gore Street, Suite 102
Kingston, Ontario K7L 2L1

Rogers & Trainor

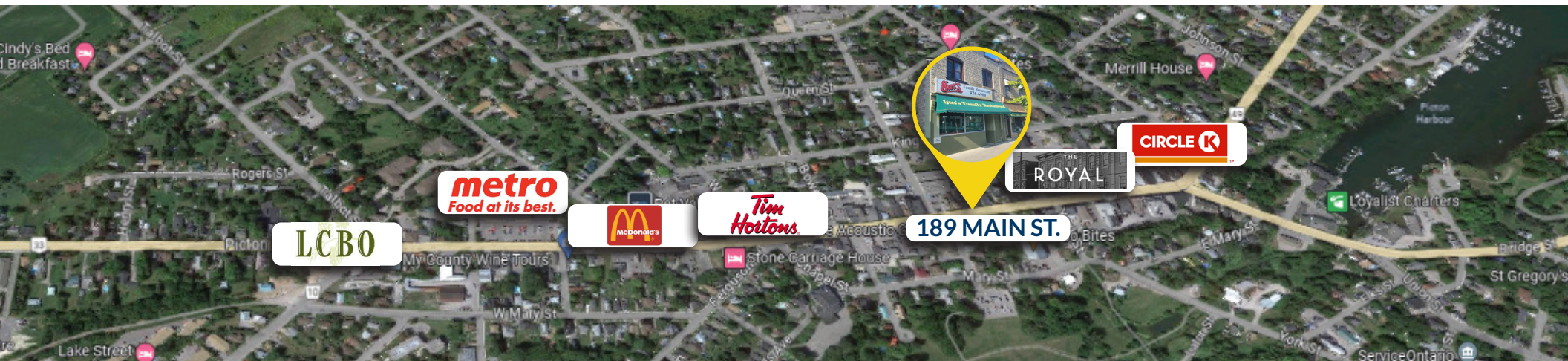
Commercial Realty (2009) Inc.
Brokerage

WWW.RTCR.COM

All information provided is deemed reliable but is not guaranteed and should be independently verified.

FOR SALE

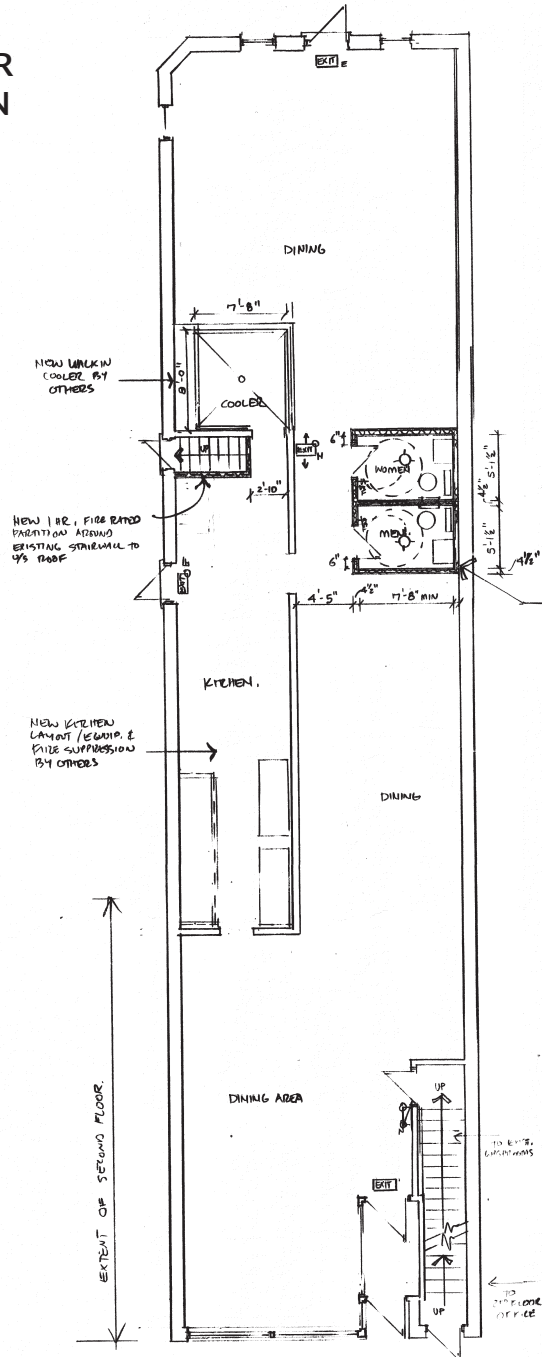
189 MAIN STREET, PICTON



FOR SALE

189 MAIN STREET, PICTON

MAIN FLOOR FLOOR PLAN



- Picton is located in Prince Edward County, roughly 160 km east of Toronto, and approximately 84 km west of Kingston
- Known for its architecturally significant buildings, and Main Street shops, Picton is a popular tourist destination
- Home to some of Ontario's most magical natural hotspots, like Lake on the Mountain and Sandbanks Provincial Park, Picton is home to attractions for all ages
- With its local economy comprised largely of small businesses, many people relocate to Picton to pursue entrepreneurship.

NEIGHBOURHOOD HIGHLIGHTS

RESTAURANTS

- The Acoustic Grill
- McDonald's
- Crepe Escape
- The Blue Sail Seafood
- Tim Horton's
- KFC

FITNESS & RECREATION

- The Country Club and Spa Inc.
- The Centre for Health & Fitness
- Sandbanks Provincial Park
- Lighthall Vineyards
- Glenora Ferry
- Macaulay Heritage Park

GROCERY

- Metro
- NoFrills
- Foodland
- Taste Your World
- Bulk Barn
- Giant Tiger
- Agrarian Market
- Penny's Pantry

AMENITIES

- Service Ontario
- The Beer Store, LCBO
- BMO, CIBC, RBC, Scotiabank, TD
- Dollarama
- Pet Valu
- Canada Post
- Canadian Tire
- Rexall

